

Barrington Manor at Providence
STEPHEN



Elevation A

Approx. square feet: 1,950

Stories: 1

Bedrooms: 3

Garage: 2-car

Plan Number: L19S

The ranch-style Stephen plan is perfect for entertaining, with a spacious great room, an open dining room and a well-appointed kitchen with a roomy walk-in pantry, ample counter space and gourmet features. The relaxing master suite boasts a massive walk-in closet and deluxe bath, and is separated from two additional bedrooms for privacy. Personalization options include a study and a covered patio.

Available elevations:



Elevation A



Elevation B



Elevation C

COMMUNITY LOCATION

7125 Stanley Frederick Street
Las Vegas, NV 89166
702-638-4440

HOME GALLERY

7770 South Dean Martin Drive, Suite 308
Las Vegas, NV 89139
702-617-8400



COMMUNITY LOCATION

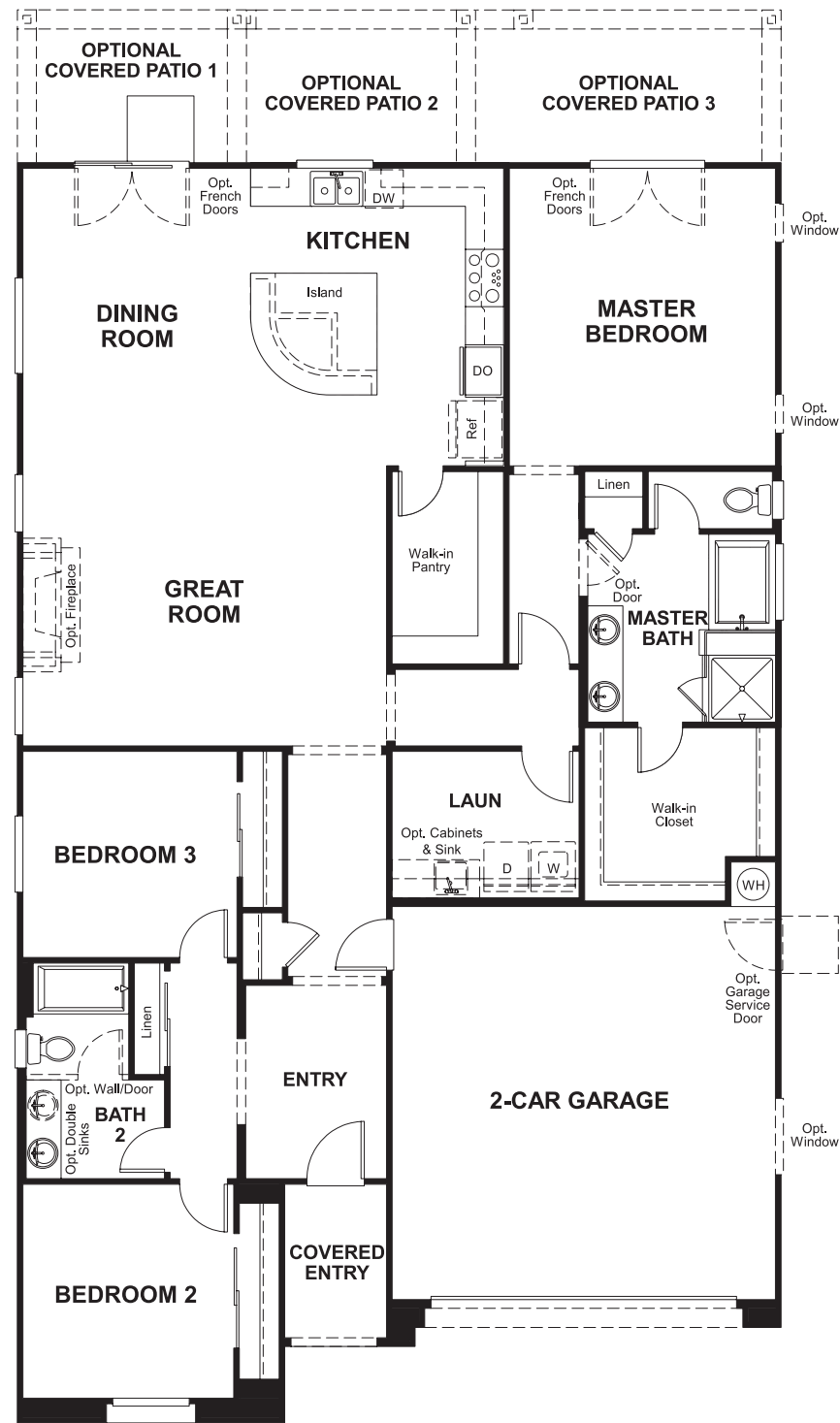
7125 Stanley Frederick Street
Las Vegas, NV 89166
702-638-4440

HOME GALLERY

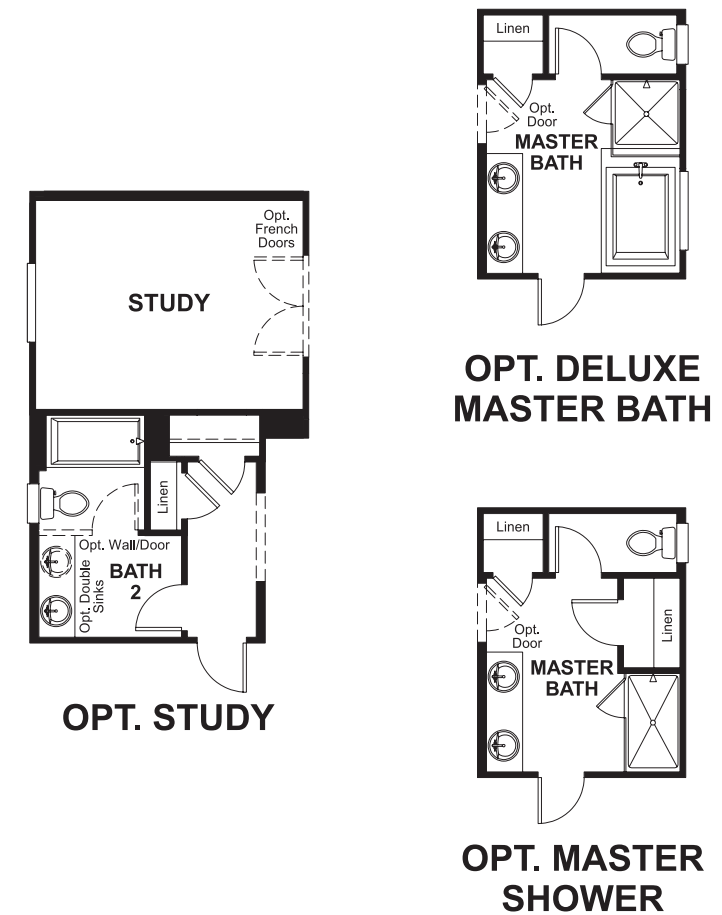
7770 South Dean Martin Drive, Suite 308
Las Vegas, NV 89139
702-617-8400



Floor Plan
Main Floor



Floor Plan
Main Floor Options



**THIS PLAN'S PROJECTED
HERS® INDEX = 65***
Projected Rating Based on Plans – Field Confirmation Required

How does this floor plan rate?
Take a look: **100** = Standard new home* **130** = Typical resale home**
The lower the number, the better! Refer to the RESNET® HERS index brochure or go to www.RESNET.us for details.

What's a HERS® Index? HERS stands for Home Energy Rating System, a system created by RESNET® to measure home energy efficiency.[^]
A Projected HERS index or rating is a computer simulation performed prior to construction by a third-party HERS rater using RESNET-accredited rating software, rated feature and specification data derived from home plans, features and specifications, and other data selected or assumed by the rater. The projected HERS index is approximate and is subject to change without notice. Actual results will vary.

*This information is presented for education purposes only. The HERS index for a confirmed rating will be determined by a third-party HERS rater based on data gathered from on-site observations and, if required, testing of rated features for a home as featured, optioned, located, oriented and/or built.
+Standard new home is based on the RESNET® Reference Home definition with a HERS® index of 100 (based on the 2006 International Energy Conservation Code).
**Typical resale home is based on the U.S. Department of Energy definition with a HERS® index of 130.

[^]RESNET® has developed the HERS® index to indicate the comparative efficiencies of homes. It is no guarantee that energy efficiencies will be achieved.